

ADVANCES COURSES

PADI ADVANCED OPEN WATER DIVER COURSE:

Training Fee (payable directly onboard the yacht) \$ 455

PADI eLearning Fee (payable directly at www.padi.com) \$ 240

NITROX CERTIFICATION COURSE

PADI NITROX COURSE

Training Fee (payable directly onboard) \$ 355

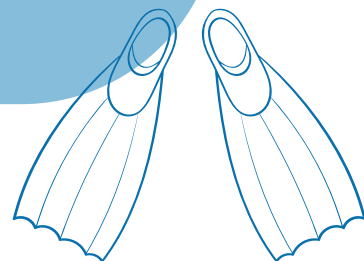
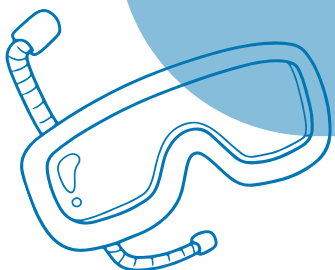
PADI eLearning Fee (payable directly at www.padi.com) \$ 204

NITROX STUDENT FILLS:

7 NIGHTS \$ 80

10 NIGHTS \$ 130

This is all Nitrox tank fills at 32% beyond the certification level and is only available to those who take the course onboard.



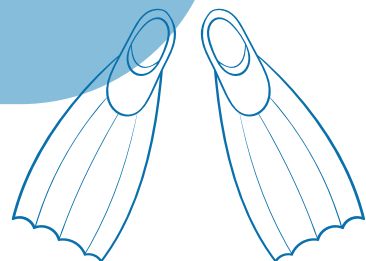
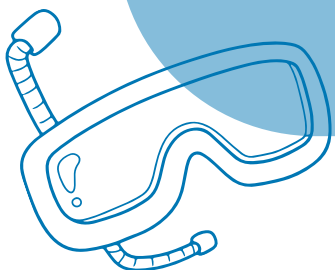
ADVANCES COURSES

NITROX CERTIFICATION COURSE :

NITROX UNLIMITED (FOR CERTIFIED NITROX DIVERS)

7 NIGHTS	\$ 100
10 NIGHTS	\$ 150

(Daily rate is pro-rated by diving Day)
This includes all Nitrox fills at 32% for
certified Nitrox Diver proof of certification is
required.



TRAINING FEE & STUDENT PACKAGE FEE

All students will need to pay both the Training Fee and Student Package Fee for each course. The Guest Information System (GIS) will allow you to request one of the above courses in advance and will give the yacht staff advance notice of your intent. It is not a commitment on your part to take the course. The requested course is confirmed once onboard and any fees will be paid at the end of your trip.

STUDENT PACKAGES (MATERIALS):

Advanced and Nitrox courses both utilize e-learning materials. Your instructor should be able to help you arrange for access to download them to your phone, tablet, or laptop before the yacht leaves range of an internet signal.

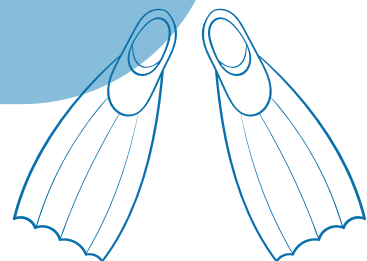
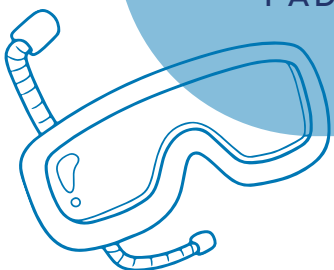
When enrolling in a PADI eLearning program, you will pay PADI directly and then download your materials.

For students enrolling in SSI courses, please download the free MySSI App on your tablet or smartphone. You'll be able to review your Digital Materials on it, even while offline.

Student Packages are non-refundable. Once you have obtained a digital student package from PADI or SSI they are yours to keep.

SSI: [HTTP://WWW.DIVESSI.COM](http://www.divessi.com)

PADI: [HTTP://WWW.PADI.COM](http://www.padi.com)



COURSES REQUIREMENT

To enroll in any scuba training program, all students must complete the Diver Medical Participant Questionnaire.

Minors must have this signed by a parent or guardian. The purpose of the Medical Questionnaire is to find out if your doctor should examine you before participating in recreational diver training.

If you have questions, please consult with your physician. All certification agencies require students to complete this form. Please present this form along with the signed Physicians Evaluation Form (if needed) to the onboard instructor to begin any course

